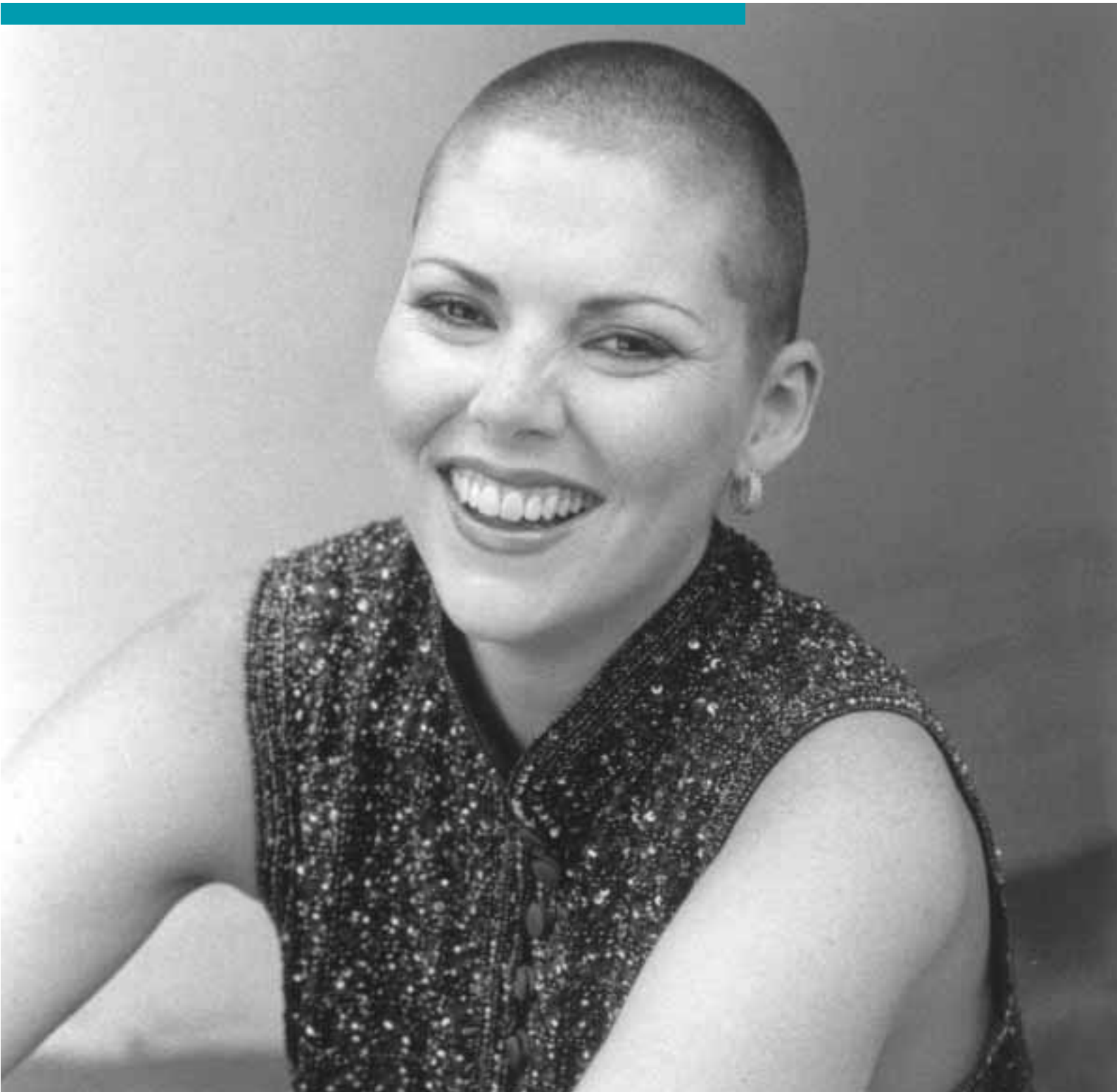


Bone Marrow Donor Institute Annual Review **2004**



Giving hope, saving lives

Contents

Message from the Chief Executive	3
Introduction	4
Message from the President	5
Board of Directors	6
Financial Summary	8
BMDI Projects	10
New Initiatives	14
BMDI and Corporate Australia	15
Highlights	16
Community Support	18
Treasurer's Report	19
Financials	20
Directors' Declaration	28
Auditor's Report	29
Contact Details	30



Sophie

Sophie Morell was 27 when diagnosed with acute lymphoblastic leukaemia and given 12 months to live without a transplant. Fortunately, a Norwegian donor gave Sophie a second chance at life through a totally selfless act for someone he has never met.

"Now two years on from my transplant, I can now say that my life is better now, post-transplant than it was beforehand.

All thanks to my Norwegian donor.'

Sophie Morell.

Bone Marrow Donor Institute

Locked Bag AAA
PO Carlton South VIC 3053
Phone: 61 3 9342 7888
Fax: 61 3 9342 7842
Website: www.bmdi.org.au
ABN 93 097 333 018
ACN 097 333 018

Chief Patron

John Landy AC MBE

Patrons

Sir John Holland AC
Sir Gustav Nossal AC CBE
Deborra-lee Furness
Hugh Jackman

Ambassadors

Tara Moss
Tracey Curro

Honorary Lawyers

Corrs Chambers Westgarth

Honorary Accountants

Moore Stephens HF
Chartered Accountants

Honorary Auditors

Draper Dillon
Chartered Accountants

Message from the Chief Executive

This year has been a year of consolidation for the Bone Marrow Donor Institute, both in terms of the development of new projects and strengths of existing projects.

Projects such as BMDI House were completely operational and running at full capacity, providing a much needed service for cancer patients and their families.

We expanded the recruitment of bone marrow donors to different ethnic communities, to increase the diversity of the registry. In particular, this year we focused on rallying the support of the Sri Lankan and Vietnamese communities, with great success, increasing the chance of survival of patients from these backgrounds.

Numerous events throughout the year and the support of our patrons and ambassadors helped raise awareness of the Bone Marrow Donor Institute and our projects. The Red Ball, Footy Colours Day and The VicRoads Great Victorian Bike Ride all helped to highlight the need for support and raised the much needed funds for our continuing work.

During the year, our organisational structure changed and expanded with the creation of new positions, including the appointment of a Marketing and Development Manager, Business Development Manager and Community Projects Officer. This has added strength to the organisation through a diversity of skills and ensuring innovative and long-term planning and implementation of our projects.

Looking towards the future, we are aiming to replicate our projects in other states throughout Australia, which will help us to continue to build a national profile and to increase the number of people we can serve.

I would personally like to thank our wonderful staff, volunteers, donors, patrons and ambassadors, project partners and supporters for their continuing support.



Jane E. Hill
Chief Executive



As always, it is a privilege to meet the amazing families and patients that we serve. Their enduring courage and strength inspires us all.

Jane Hill, Chief Executive

Introduction

*Giving hope,
saving lives*



The Bone Marrow Donor Institute is dedicated to saving the lives of patients with leukaemia and other life-threatening illnesses through care, support, treatment and research.

Our History

The Bone Marrow Donor Institute's beginning arose from the desperation and helplessness of a group of parents and has become a place of immense hope.

In 1989, these parents, all tragically touched by leukaemia vowed to ensure that no other family would suffer the way they had suffered.

They pooled their energy and resources and created an organisation that would treat, support and care for people with leukaemia and other related blood disorders.

Their first aim was to establish a bone marrow donor registry in Australia for patients with leukaemia who could not find a match within the family. At the time, the only option was to search overseas registries, which was costly and fraught with delays.

Today many of those same parents make up BMDI's board of management who volunteer their time and expertise to help us achieve our mission and vision.

Our Work Today

Today, the Bone Marrow Donor Institute continues its work with cancer patients and their families through a number of different projects. In addition to encouraging people to join the Australian Bone Marrow Donor Registry, we also established the BMDI Cord Blood Bank and fund medical research into developing better treatment methods, prevention and cures.

In 2004, we laid the groundwork for our Back on Track Program, designed to provide a better future for children and young people with cancer through personalised education and physical rehabilitation programs.

Services for patients and families has extended to BMDI House in Melbourne, a home away from home for rural, interstate and disadvantaged families, as well as various support groups and counselling services.

Our Future Directions

Although our beginnings centred on establishing a registry and then later the BMDI Cord Blood Bank, the need to provide better treatment, support and care for cancer patients is growing and has meant that BMDI has expanded its work.

The Bone Marrow Donor Institute is continually adapting to the needs of cancer patients and their families to fulfil our role in making the journey through treatment and recovery as smooth and easy as possible, giving as many people a second chance of life.

We are working towards a future without cancer, but in the meantime, we provide the tools to empower cancer patients to take back what cancer often takes away.

Tanya and David Lea who stayed at BMDI House while Tanya received a bone marrow transplant.

Message from the President

The Bone Marrow Donor Institute (BMDI) was created in 1989 to establish the Australian Bone Marrow Donor Registry.

After achieving our initial aim, we have adapted and responded to the greatest needs of patients and families suffering from leukaemia and other cancers.

At all times we aim to make the journey for patients and their families through diagnosis, treatment and hopefully recovery as uncomplicated as possible.

We responded to the need for affordable and tailor-made accommodation for patients and their families during treatment and recovery. Specially designed units catering for the need for isolation for long periods of time saw the establishment of BMDI House in North Melbourne. Now we are giving consideration to regional BMDI Houses.

Through the creation of the Australian Bone Marrow Donor Registry and the BMDI Cord Blood Bank many patients, both young and old, have been given a second chance of life. More than 1200 leukaemia patients have received life-saving bone marrow transplants through the registry and 45 children through the BMDI Cord Blood Bank.

Aside from the physical needs of patients and their families, we have also responded to the less tangible needs. The BMDI support groups and counselling service for cancer patients and their families can often be a source of strength and hope for patients and families.

As we look towards the future, we have already laid some great foundations that will help us to continue in providing the highest quality of projects.

BMDI is assisting the Gynaecological Cancer Research Centre to develop a unique early detection test for ovarian cancer that will save the lives of at least 60% of all women worldwide that currently die of ovarian cancer. The new Back On Track program will respond to the educational and physical needs of young cancer patients. Funding for the incredible work of the Rotary Bone Marrow Research Centre continues and we are privileged to be able to support their vital work.

I acknowledge with appreciation our partnerships with the Royal Children's Hospital, Murdoch Children's Research Institute, Red Cross Blood Bank, Royal Melbourne Hospital, Royal Women's Hospital and the magnificent support of Rotary International and Lions.

I thank the board members, who continually give of their time and expertise and through various committees, provide the vision and passion to guide the Bone Marrow Donor Institute in our endeavours.

Another successful year has only been possible through the support and dedication of all our members, supporters, volunteers, stakeholders, Patrons Sir John Holland, Sir Gustav Nossal, Deborra-lee Furness and Hugh Jackman and Ambassadors Tara Moss, Tracey Curro and Mark McVeigh, the CEO, management and staff. Your work is truly valued and I wish to thank you.



With your continuing support the Institute will continue to strive to achieve an even greater contribution to the well-being of the Australian community.

A handwritten signature in blue ink, which appears to be 'John Opie AM'. The signature is written in a cursive style and is positioned above the printed name.

John Opie AM
President

John Opie, President.

Board of Directors

The Directors

The Directors at the conclusion of the financial year were as follows:

David Alsop B. Arch., Reg. Architect, FRAIA

David is a commercial Architect and is a Fellow of the Royal Australian Institute of Architects. He is a past Board Member of the Lort Smith Animal Hospital (1985-1998). David became involved with the Bone Marrow Donor Institute after his son received a bone marrow transplant in 1996. David joined the Board in 1999 and has special responsibility for BMDI support groups and provided project management advice for the construction of BMDI House.

Sophia Elliott

Sophia has been a Board member of the Bone Marrow Donor Institute since 1991. She has a 30 year career in advertising, marketing and PR. She spent nine years on the Executive Board of Monahan Dayman Adams and was General Manager of Gasworks Pty Ltd. Sophia was a Partner and Director of Magnum Opus Advertising Pty Ltd for nine years and is currently managing director of Company Services Australia Pty Ltd and SME Promotions, an advertising, brand awareness and PR entity. She is also on the committee of the De La Salle Old Collegians Football club, a position held for three years. Sophia has been actively involved with major BMDI events such as the Lap for Leukaemia and Deano's Walk as well as the Red Ball Committee.

Bernie Lamers JP (Vice Chairman)

Bernie is a founding member of BMDI and has held the position of Vice Chairman since 1992. Bernie is a Director of a number of private companies including Lamers Constructions. In 1997 Bernie together with his wife Gerry were awarded citizen of the year in the shire of Nillumbik. Also in 1997, Bernie was awarded the Rotary Paul Harris/ Sapphire Award, in 2001 the Centenary Federation Award and in 2002 received an Anzac of the Year Award. In 2003 – 2004 he served as President of the Rotary Club of Preston. Bernie is a member of the BMDI Eltham/Diamond Valley Branch and was responsible for the refurbishing of the BMDI House and in securing Rotary's support for the project. Bernie is also Chairman of the Rotary BMDI House Appeal. He is a member of the BMDI House Advisory Committee.



The Board of the Bone Marrow Donor Institute consists of independent non-executive directors. The Board meets at least eleven times per year. The Board has recently defined its role as follows:

To establish and regularly review BMDI's vision, mission and values.

To scrutinize and approve an annual business plan and budget which translates the mission into tangible objectives and sets out how the objectives will be achieved.

To ensure at all times that BMDI is acting legally and ethically in accordance with recognised community standards.

To ensure that best practice corporate governance procedures are in place and being observed at all times.

To appoint, monitor and assist the CEO who is solely responsible for the day to day management of the Institute – reporting to the Chairman and the Board of Directors.

To monitor and review the performance of BMDI including finances, risk and progress towards achievement of its objectives and to ensure accountability to stakeholders.

Board of Directors, clockwise from right: John Opie, Jane Hill (Chief Executive), Fay Duncan, Alf Long, David Alsop, John Barbour, David Cox, Bernie Lamers, Sophia Elliott. Absentee: Les Willmott, Eric Wright, Geoff McIlvenna.

Mr Geoff McIlvenna

Geoff is a Senior Sergeant of Police and in charge of more than 80 staff members at the Mill Park Police Station. Geoff has been a Rotarian for almost 20 years, a past Rotary District Governor and former president of the Preston Rotary Club. He was awarded the Paul Harris Fellow in 1996 and was a leader in organising the Moira Kelly farm project. Geoff has also been instrumental in the drive to secure Rotary support for BMDI House of which he is a member of the advisory committee.

John Opie AM (Chairman) FCA (retired)

A founding member of BMDI, John has been BMDI's President and Board Chairman since BMDI's inception in 1989. John is a non-executive Director of the Australian Bone Marrow Donor Register and he is the Chairman of several private companies. In 1995, he received the Tattersalls Award for Enterprise and the Rotary Paul Harris Award. He is also the recipient of the Waverley Citizen of the Year award and the Sir John Reid Community Service Award from the Rotary Club of Melbourne. From 1987 to 1988, he was the National President of the Federal Government Productivity Council. He is a past Board Member and Treasurer of the RSPCA. In 2002 he received an Order of Australia.

Les Willmott JP

Les is the former Secretary of the Plumbing Division of the CEPU and director of CEPTec, Director Co-Invest Director Construction Training Australia. He is a leading member and publicity officer for the Croydon branch of BMDI and has been a councillor for the City of Maroondah and the former city of Croydon for 17 years, six of them as Mayor. He has represented Council on the Business Advisory Board, and the former city of Croydon for 17 years, Don-Wood Nursing Home and Daycare Group, Grants Panel, Leisure and Culture Panel, Ringwood Town Centre Working Group and the Ringwood Transit City Ministerial Advisory Committee. Les was awarded the Paul Harris Award by the Croydon Rotary Club in 2004. Les became involved with BMDI when his daughter was diagnosed with leukaemia.

John Barbour

John has been a Board Member and Honorary Treasurer of the Bone Marrow Donor Institute (BMDI) since 1992. In 2003 he was appointed to the BMDI Cord Blood Bank Management Committee and last year assumed the role of Chairman of that Committee. In business life John is a Chartered Accountant and Certified Financial Planner. He started with a small accounting firm at the age of 16 and has been a Partner for 35 years. He has been Senior Partner of the firm and the Australasian representative on the International Policy Committee. Prior to his involvement in BMDI, John was Branch Treasurer, Branch Chairman and Honorary National Treasurer of Community Aid Abroad. A position he held for a period of ten years.

Don Cox

Don is a Certified Practising Accountant, Registered Tax Agent, Company Auditor and member of CPA Australia. He is the Managing Partner of Cox Partners Accountants Pty Ltd in Essendon, which he founded in 1972. A Rotarian since 1976, Don served as President of the Rotary Club of Broadmeadows in 1992/93 and was recognised as a Paul Harris Fellow in 1995. Don was District Governor of Rotary International District 9790 during 2000/2001. In 2001 he was elected as First National Chairman of the Australian Rotarians Corporate Alliance Program Ltd for the Rotary Districts of Australia. Don was also Chairman of the 38th Rotary Zone Institute for the Rotary Districts of Australia held in November, 2003.

Eric Wright

Eric has had thirty years experience in the banking and finance industry with extensive experience in human resource management, sales management and major project management. He is active in various community activities including Very Special Kids where he headed a fundraising committee until recently and Young Achievement Australia where he holds a seat on their Advisory Board for Victoria and Tasmania.

Fay W Duncan

Fay is a founding member of the Bone Marrow Donor Institute and has held the position of Secretary from 1990 – 1992 and 2001 to date. Fay was the Executive Director of the Bone Marrow Donor Institute from 1992 until her retirement in 2001. Fay has previously held positions of Associate Director, Company Secretary and Administration Manager of several private and public companies. She supported two children's homes with hands on assistance and fundraising. Fay was involved with the planning, furnishing and décor of BMDI House and is a member of the BMDI House Advisory Committee. She is chairman of the Red Ball Committee and the Back on Track Program.

Alf Long

Alf is a retired banker who gained wide experience during the 44 years he spent working with Commonwealth Bank of Australia in four Australian states. During his successful career he occupied many senior executive roles culminating in his appointment as Head of the Bank's Australian retail operations. He is Chairman of the BMDI House Advisory Committee and involved in the development of a project to expand BMDI's representation into regional Victoria.

Financial Summary

TBC – following the release of the financial details

Pic:

1. Graph of source of income
2. Graph of money to projects

Financial Summary

BMDI Projects

Australian Bone Marrow Donor Registry

The gift of life

Each year, over 1,000 cancer patients search the Australian Bone Marrow Donor Registry (ABMDR) for an unrelated donor. The establishment of the registry has provided a second chance of life for over 1200 leukaemia patients in Australia and overseas.

In 2004, 101 transplants were performed using Australian donors, both here and overseas and 55 Australian patients received a transplant from an overseas donor.

The proportion of collections via peripheral blood stem cell donation compared with bone marrow donation via general anaesthetic continues to increase in Australia. This procedure does not require a general anaesthetic and takes approximately four hours.

A total of 163,089 Australians are now on the Australian Bone Marrow Donor Registry and this year saw the launch of our Ethnic Donor campaign, which encouraged people of diverse ethnic origin to join. With donor compatibility linked to ethnic origin, it is vital to increase the diversity of donor ethnicity on the registry.

In particular, we joined with the Sri Lankan and Vietnamese communities in Australia and initiated an awareness and education campaign about the donor process and the need for people of Sri Lankan or Vietnamese background to join the registry.

The tireless efforts of key community members helped raise over \$50,000 to help develop a registry that reflects Australia's multicultural society, as well as assist Thanuja De Saram from Sri Lanka receive the bone marrow transplant he needed for survival. Further funding was generously provided by the Victorian Multicultural Commission to assist with the Ethnic Donor Project.



Thanuja

Thanuja De Saram, 21, suffered a relapse early in 2004, after previously recovering from leukaemia in 2000. Thanuja was lucky that his brother Kanishke was a match and became his donor. Kanishke was conscious throughout the process of donation, which required a course of hormone injections for four days to encourage the body to produce more white blood cells. These cells were then removed through a process similar to giving blood, where it is passed through a machine, which removes the white cells, and the remaining blood is returned to the patient. This process took around four hours. For Kanishke, this was a small sacrifice in order to provide a second chance at life for his younger brother.

Thanuja De Saram, with father Sam.
Photograph courtesy of Geelong Advertiser.



THE AUSTRALIAN BONE
MARROW DONOR REGISTRY



Proud partners helping the Bone Marrow Donor Institute further develop the Australian Bone Marrow Donor Registry.

BMDI House

A home away from home

In its first full year of operation, the BMDI House in North Melbourne played an incredibly valuable part in the process of recovery for cancer patients in providing a sanctuary for them, their families and carers.

The generous support of many Australians has meant that BMDI was able to help over 70 families from around Australia as well as overseas including Fiji and Sri Lanka.

People Who Benefited

Adults	273
Children	37
Total No. Families	71

Where They Are From

Victoria	178
New South Wales	36
Tasmania	65
Northern Territory	20
Overseas	8

Those that have lived at BMDI House have commented on the support and network the house provides, care that goes well beyond that of the physical building. Support groups and a counselling service are available at the house, and many find just being able to share their experience with other families going through similar experiences is just what they need.

The Bone Marrow Donor Institute is greatly indebted to Rotary for its continuing efforts in raising funds for the BMDI House Capital Appeal.



Aden D'Helin-Lawrie, 7, and his family arrived at BMDI House from Wodonga in September 2004, after Aden was diagnosed with leukaemia.

"Being so far away from home has been difficult, but BMDI House has provided us with a comfortable and caring environment during Aden's chemotherapy treatment and recovery over the last six months. The facilities and staff have been an amazing support during such a difficult time."
- Faye D'Helin.

BMDI Projects

BMDI Cord Blood Bank

One cord, two lives

It is an extraordinary gift to be able to give a second chance of life to a child. For the mothers that decide to donate their umbilical cords, they are not just giving life to one child, but potentially, to two.

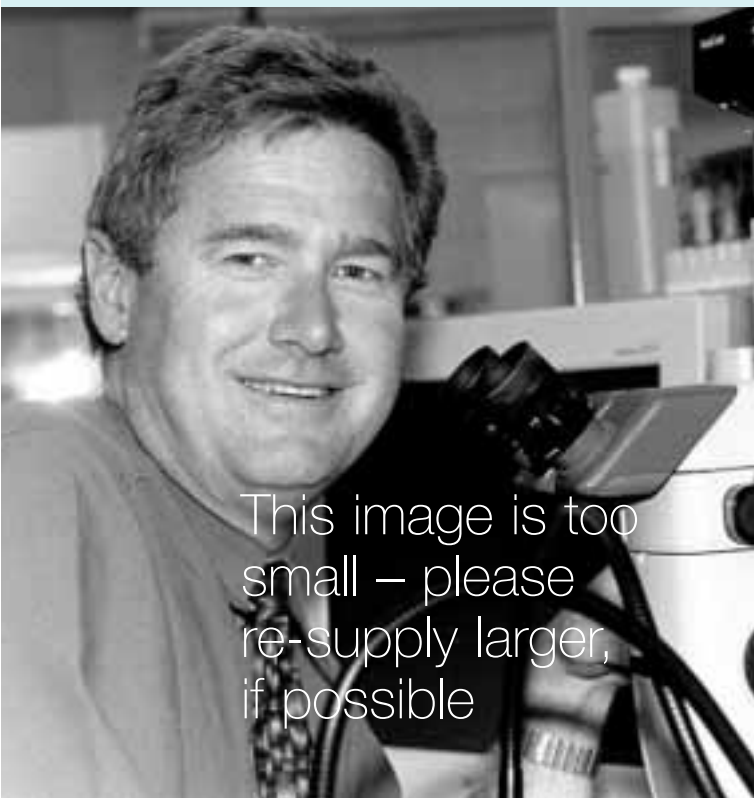
The blood from the umbilical cord is usually discarded after birth, but the establishment of the BMDI Cord Blood Bank to date has offered 45 children a life-saving transplant with a cord blood unit.

In 2004, there were 1,258 cord blood units collected through our collection centres at the Royal Women's Hospital, Box Hill Hospital and Angliss Hospital. This brings the total of cord blood units to 5,065. During the year, 14 units were released for transplant, 7 to Australian patients, and 7 to overseas patients.

The BMDI Cord Blood Bank appointed a new Scientific Director, Dr Annette Trickett this year, who has taken over from Dr Simon Bol. BMDI Cord Blood Bank participated in the Auscord Network which facilitates increased collaboration and a shared vision for the future of cord blood banking in Australia.

The BMDI Cord Blood Bank has only been possible through the generous support of the Ronald McDonald House Charities and the partners of the Cord Blood Bank Committee, which includes the Murdoch Children's Research Institute, The Royal Children's Hospital and the Australian Red Cross Blood Service.

The Lions Cord Blood Foundation has also greatly supported the project throughout the year, by raising awareness and funds and we look forward to their support in the future.



This image is too small – please re-supply larger, if possible

Medical Research

Working towards finding a cure

The Bone Marrow Research Laboratories located at the Rotary Bone Marrow Research Centre on the Royal Melbourne Hospital campus, is staffed by four Principal Investigators and a team of thirty scientists, students and technical support staff.

2004 was a year of great success for the laboratory, with the attraction of substantial peer reviewed financial support from various national and international funding bodies and an increase in the level of community involvement through Rotary groups and schools. An excellent publication record in top international journals was also achieved with 36 publications and articles in *Nature Medicine*, *EMBO Journal*, *Molecular and Cellular Biology* and *Blood Development* to name just a few.

Of particular note was the identification by Drs Visvader and Lindeman with the identification of a mammary stem cell, which will allow further research in the area of breast development and cancer. PhD student Dr Stephen Ting had a manuscript published in the prestigious journal *Nature Medicine*, detailing the discovery of a gene involved in spinal cord closure.

The Director of the Bone Marrow Research Laboratories, Dr Stephen Jane.

Support Groups

Providing care and support

The Bone Marrow Donor Institute provides four support groups, the Breast Cancer Support Group, the Bone Marrow Transplant Patient Support Group, the Leukaemia Family Support Group and the Vietnamese Cancer Support Group.

Bone Marrow Transplant Support Group

The Bone Marrow Transplant (BMT) support group is in its fifth year and is well patronaged with over 350 members. This year, they made use of the facilities at BMDI house and provided wonderful support for each other.

The members were involved in a number of activities, including 2 members participating in the Athens Olympic Games as volunteers, 2 members participating in an opera, which they helped to write and produce that explored the impact that cancer has on the individual and their family and also volunteering their time for a number of different organisations.

The group offers support and friendship to one another in a safe non-threatening environment and this will continue to be the focus for the coming year.

Leukaemia Family Support Group

The Leukaemia Family Support Group had an extremely fulfilling year for all members, providing support for families residing at BMDI House as well as occasionally giving support via telephone.

We feel that our objectives of family support are now, more than ever, being met.

BMDI Breast Cancer Support Group

2004 was a year of major significance for the Breast Cancer Support Group with 45 members celebrating the group's tenth anniversary at the annual Christmas Party in December. Photos of our past Christmas parties were prominently displayed; the majority of those attending were present at our 1997 party.

In Victoria in 2004 there are now more than 30 breast cancer support groups. Research has identified a positive link between health and social support and groups such as ours are now widely recognised as an essential part of the treatment process.

The friendships formed within the group are strong and enduring, providing comfort and strength through good times and bad. Those living with advanced disease help and support each other. Their example enables us to live with uncertainty, acknowledge the reality of a possible recurrence and to face the future with courage.

"It is the right of every woman diagnosed with breast cancer to decide what information and support is appropriate for her. Not all women wish to have detailed information about breast cancer nor to join a support group.

Membership of our group has allowed us the freedom to express the thoughts that others may not wish to hear, to acknowledge our fears of the unknown. Information obtained through the group enables us to make informed choices about what is right for us. We see our relationship with our medical practitioners as a partnership and for us knowledge is empowering."

Vietnamese Cancer Support Group

The Vietnamese Cancer Support Group, or the Sunflower Group as it is known within the Vietnamese community, was established by Neil Hunyh, another dedicated volunteer of the Bone Marrow Donor Institute. The Sunflower Group provides friendship and support for Vietnamese cancer patients as well for their friends and family.

The communities' familiarity and acceptance of the group continues to grow as it emphasises that there is no shame in having cancer, and that the Sunflower Group is there to help the patients and their families during this difficult period.

Counselling Service

The Bone Marrow Donor Institute, in association with the Australian College of Applied Psychology, provides care and support for cancer patients and their families through the provision of a confidential counselling service.

New Initiatives



New image
to come

Dream Ward

The Bone Marrow Transplant Unit of the Royal Melbourne Hospital was transformed through a collaboration of a number of organisations, including the Bone Marrow Donor Institute. Due to the length of time patients are required to stay in isolation within the ward, the hospital staff wished to create a comfortable and homely environment for them, which is now aptly named the 'Dream Ward'.

The transformation involved communication tools, entertainment systems and a colour-coordinated makeover. These were designed to help keep patients in touch with the outside world and make their environment as comfortable as possible.

The Dream Ward provides comfort for patients of the Bone Marrow Transplant Unit at the Royal Melbourne Hospital.

With the encouragement and assistance of its donors and supporters, the Bone Marrow Donor Institute was able to help cancer patients and their families through its various initiatives and during the year we announced new projects, which will diversify the support we provide.

Ovarian Cancer

Over 700 women in Australia die from ovarian cancer each year and it is the predominate form of gynaecological cancer. In response to this, BMDI announced that we would assist the Gynaecological Cancer Research Centre at the Royal Women's Hospital to develop an early detection test for ovarian cancer.

Back On Track

The end of 2004 also saw the stage set for an exciting new project, the Back On Track Program. This program is designed to address the specific needs of young cancer patients in the areas of education and physical rehabilitation. In partnership with the Education Institute and the Haematology and Oncology Ward at the Royal Childrens Hospital, BMDI will be implementing the program in 2005, ensuring children with cancer of all ages are not disadvantaged due to prolonged periods spent in hospital and that they don't become isolated from their school and community.

BMDI and Corporate Australia

It's been an exciting year for the marketing and communications team at the Bone Marrow Donor Institute. Our team has been restructured to be more efficient and effective, especially in working with Corporate Australia.

Our partnerships with both global and Australian owned corporations have been growing steadily and this past year has seen many new developments and achievements.

The Bone Marrow Donor Institute launched Footy Colours Day amongst the corporate market and over forty companies and their staff across Australia, responded positively and participated in a range of activities. The funds raised have helped provide a better future for disadvantaged children living with cancer.

Also, we saw the launch of the Back on Track Program, developed by the Bone Marrow Donor Institute to help young cancer patients through education and physical rehabilitation programs. This program has been supported by companies such as P&O Nedlloyd, The Myer Community Fund, Grosvenor Foundation and Clive Peters.

The generous support of Swann Insurance management and staff has seen thousands of dollars and volunteer hours go into a wide range of projects and activities – from assisting cancer patients and families at the BMDI Accommodation Centre to helping with our annual Red Ball.

Many other companies and their staff also joined us in our vision to provide a better future to people living with cancer, such as Westpac Banking Corporation, Kraft Foods, Macquarie Charitable Foundation and National Australia Bank.



In 2004, our Red Ball was an outstanding success and would not have been possible without the generosity and support of companies such as iFocus, Foxtel, Qantas, Monards, CC Containers, Mount Avoca, L'Oreal, ANZ Banking Group, Stamford Plaza and Sunraysia, all of whom contributed generously through financial and in-kind support.

NEC helped make the Dream Ward a reality within the Bone Marrow Transplant Ward at the Royal Melbourne Hospital by providing DVD/video players for each room and creating a better environment for the hundreds of leukaemia patients undergoing treatment, spending many months in isolation away from home.

We would like to thank all of our corporate supporters, too numerous to mention here, for the life-changing support they, and their staff are giving to thousands of leukaemia and cancer patients in Australia and overseas.

Giving someone a second chance at life is priceless – and together, that is what we are doing.

Mr Iwasa, Managing Director of NEC Australia together with Dr Andrew Grig of the Bone Marrow Transplant Ward present the DVD/Video players at BMDI Dream Ward. Image supplied by Wildcat Digital.

Highlights

Our high profile Patrons and Ambassadors continued to increase awareness of the Bone Marrow Donor Institute's work and encouraged more people to support us through their involvement.



Red Ball

Now in its tenth year the Red Ball, held in October, exceeded everyone's expectations. Hosted by BMDI Patrons Deborra-lee Furness and Hugh Jackman, the night was attended by over 1200 guests in the Palladium Ballroom of Crown Towers in Melbourne. The incredibly successful night raised a gross figure of over \$500,000, making it the most successful Red Ball to date. The night involved a number of performers, who donated their time for the event, as well as many companies donating items for auction.

Hugh Jackman performing at the Red Ball.



The VicRoads Great Victorian Bike Ride

Australia's number one crime writer and international model, Tara Moss, who joined us as an Ambassador in 2003, took on the amazing challenge of participating in the VicRoads Great Victorian Bike Ride. In November, this 570km ride from Port Fairy to Geelong involved over 7,000 riders. Tara used the opportunity to raise funds and awareness about the Bone Marrow Donor Institute and saw the development of a new partnership with Bicycle Victoria.

Tara Moss gears up for the VicRoads Great Victorian Bike Ride.



Tracey Curro

National Nine News Presenter, Tracey Curro joined the Bone Marrow Donor Institute as an Ambassador, particularly focusing on the life-saving work of the BMDI Cord Blood Bank. Tracey was involved with a number of events throughout the year and attracted significant media attention to the BMDI Cord Blood Bank with a story featured on A Current Affair.



BMDI House

BMDI House was visited by a number of celebrity guests throughout the year, who met with residents and families. One such visit was from Pakistani fast bowler, Shoaib Akhtar, who took time out during the teams' tour to visit residents on Christmas Eve. Shoaib met with Aden, 7, from Wodonga who was receiving chemotherapy for his leukaemia and even joined in an impromptu cricket game.

Tracey Curro with Lockie, a cord blood unit recipient at the Royal Childrens Hospital.
Shoaib and Aden at BMDI House on Christmas Eve.



Footy Colours Day

In August, Footy Colours Day saw many new companies, schools and kindergartens wear their favourite footy team's colours to school and work. The day raised over \$50,000 for the Back On Track Program and Ambassador for the event, Mark McVeigh from Essendon, encouraged people to get involved. Mark also made a special visit to the Oncology Ward of the Royal Children's Hospital on the day.

Essendon Football Club's Mark McVeigh with children for Footy Colours Day.

Community Support



Belly Button Ball

Another successful 'Belly Button Ball' was held at 'The Point' in Albert Park and raised over \$8,000 for the BMDI Cord Blood Bank. The Macquarie Foundation matched this sum, which saw a total of \$16,500 raised as a result of the Ball.

Our BMDI Branches have again had a great year in 2004, with an impressive array of events raising awareness and much needed funds for our life saving work. As always this network of volunteers provide a face for the Bone Marrow Donor Institute at a community level.

Some of the highlights from the year included, the Swan Hill 'Rotating Dinner' that seemed to involve half the town. The short-term lease of premises in Maryborough was negotiated by the Maryborough branch rent free for the sale of Bone Marrow Donor Institute merchandise as well as coordinating our involvement at the Maroondah Festival.

The Waverley branch arranged two very successful tours to Floriade in Canberra, and the Geelong branch, a 'Black Tie Christmas Party' as well as Eltham's Annual Monster Garage Sale. In addition, there was an outstanding collection of dinners, golf days, Bo bear auctions and card sales.

Our volunteers play a significant role within BMDI, and our thanks goes to each and every one for their valuable contribution and tireless efforts to numerous activities throughout the year. Special mention must be made of Les Stephens who rattled tins and organised concerts, and through his efforts raised more than \$10,000 in 2004 for BMDI. Brilliant!

The Belly Button Ball Committee.

Treasurer's Report

Year Ended 31 December 2004

Net income from Operations was down by almost \$900,000 on 2003 due to the completion of the Accommodation Centre in 2003 and the absence of a major event in this calendar year.

After raising more than \$500,000 in 2003 on the Lap for Leukaemia (October 2003) and Deano's Walk (December 2003) our next major project of Boonie's Walk did not take place until January 2005. This event has been very successful and will appear in our 2005 figures.

The big win for the year was the Red Ball, which was buoyed by the drawing power of Hugh Jackman and Deborra-lee Furness. A net result of over \$250,000 was banked – a fantastic effort.

The Cord Blood Bank continued to grow with another record of 1,258 cords being banked during the year. The BMDI Cord Blood Bank now has a total of 5,065 cords in the bank. The continued flow of Commonwealth Government funds and cost efficiencies in the operations has facilitated this remarkable result.

In addition to the Cord Blood Bank we continued with maintaining the Bone Marrow Donor Registry and increased our commitment to Research. Several new projects were started during the year or were the subject of preliminary work. These included the refurbishing of the Bone Marrow Transplant Ward at the Royal Melbourne Hospital, the Ethnic Donor Project, the Back on Track Program, Ovarian Cancer Research and the feasibility of country Accommodation Centres.

The surplus for the year enabled us to purchase new equipment without running down our cash reserves. We continue with a strong balance sheet, which will help us to continue to fund these new projects in 2005 in advance of the targeted fund raising being received. Also in 2005 we are looking to Rotary to raise a substantial part of the funding already committed to paying off the bank loan on the Accommodation House.



John C Barbour FCA
Honorary Treasurer



Each year over 7,500 Australians are diagnosed with leukaemia or other cancers of the blood or bone marrow. In children aged under 14, leukaemia is the most common cancer with more than 225 diagnosed each year. In many cases, a bone marrow transplant can offer these patients the best chance at a second chance of life and each year over 1,000 people search the registry with this hope.

Source: Australian Institute of Health and Welfare (AIHW) & Australasian Association of Cancer Registries (AACR) 2004. Cancer in Australia 2001. AIHW cat. no. CAN 23. Canberra: AIHW (Cancer Series no. 28).

Financials

Director's Report

Your directors present their report on the results of the Bone Marrow Donor Institute Limited (BMDI) for the year ended 31 December 2004.

Directors

The names of directors in office, at any time during or since the end of the year, and their particulars are

Directors	Position	Occupation	Meeting Attendances
J M Opie AM	Director & President	Company Director	10 of 10
B A Lamers	Director & Vice President	Company Director	9 of 10
J C Barbour	Director & Treasurer	Chartered Accountant	8 of 10
F W Duncan	Director & Secretary	Director	9 of 10
D H Alsop	Director	Architect	8 of 10
S J Elliott (reappointed 17/2/04)	Director	Company Director	10 of 10
L Willmott	Director	City Councillor	7 of 10
E Wright	Director	Director	7 of 10
D Cox	Director	Public Accountant	8 of 10
G McIlvenna	Director	Police Sergeant	3 of 10
D Smith (resigned 20/7/04)	Director	Lawyer	3 of 4
A Long	Director	Director	8 of 10

10 meetings of Directors were held in the period from 1 January 2004 to 31 December 2004.

Principal Activity

The principal activity of BMDI during the period was to engage in activities associated with research, education, treatment, patient care and support services in respect of leukaemia and other cancers.

Dividends

BMDI is prohibited by its Constitution from paying dividends.

Review of Operation

The net surplus of BMDI for the year ended 31 December 2004 was \$143,444 (2003 - \$1,669,424).

State of Affairs

There was no significant change in the state of affairs of BMDI during the year.

After Balance Date Events

No matters or circumstances have arisen since the end of the financial year which significantly affect or may significantly affect the operation of BMDI, the results of those operations or state of affairs of BMDI in subsequent financial years.

Director's Benefits

Since the end of the previous financial year, no Director of BMDI has received or is entitled to receive any benefits by reason of a contract made by BMDI with a Director or with a firm of which he or she is also a member, or with a company in which he or she has a substantial financial interest and as such no Related Party Disclosure is required.

Directors' & Auditors' Indemnification

BMDI has not, during or since the financial year, in respect of any person who is or has been an officer or auditor of BMDI or a related body corporate:

- indemnified or made any relevant agreement for indemnifying against a liability incurred as an officer, including costs and expenses in successfully defending legal proceedings; or
- paid or agreed to pay a premium in respect of a contract insuring against a liability incurred as an officer for the costs or expenses to defend legal proceedings;

with the exception of the following matters:

- a) during or since the financial year BMDI has paid premiums to insure the Directors against liabilities for costs and expenses incurred by them in defending any legal proceedings arising out of their conduct while acting in the capacity of Director of BMDI other than conduct involving a wilful breach of duty in relation to BMDI. The amount of the premium was \$4,148.
- b) BMDI has entered into an agreement with each director providing the following:
 - i) BMDI has agreed to indemnify each director against any liability in their capacity as a Director to the extent permissible by law;
 - ii) BMDI has agreed to retain a copy of all papers presented to the Board during the period that the director holds office; and
 - iii) BMDI has agreed to provide access to the Board papers to the Director.

Signed in accordance with a resolution of the Board of Directors.



John M Opie AM



John C Barbour

Financials

statement of financial performance for the year ended 31 december 2004

Revenues	Note	2004 \$	2003 \$
Community Fundraising			
BMDI Branches		57,983	137,752
BMDI Shops		22,400	25,000
Donations & Bequests		348,643	612,147
Raffles		25,595	-
Trusts & Foundations		168,000	140,651
Sundry Income		34,434	37,697
BMDI Cord Blood Bank		78,586	269,454
Special Events		324,172	214,047
Major Events		-	1,596,876
Interest		21,847	-
		1,081,660	3,033,624
Grants			
Commonwealth Government – Cord Blood Bank		1,937,774	1,405,646
Victorian Government – Community Support Fund – Accommodation Centre		-	509,489
		1,937,774	1,915,135
Total Revenues		3,019,434	4,948,759
Less Operating Expenses			
Event Organisation Expenses		-	1,076,848
Operating Expenses	2	549,893	508,458
Total Operating Expenses		549,893	1,585,306
Net Income from Operations		2,469,541	3,363,453
Expenditure on Project Activities			
Tissue Typing & Donor Recruitment		19,776	17,047
Research Grants and Expenditure		239,000	214,150
BMDI Cord Blood Bank		1,973,006	1,407,569
Accommodation Centre Running Costs		71,134	37,524
BM Transplant Ward (Dream Ward)		9,091	10,000
Ethnic Donor		14,090	-
New Project Development		-	7,739
		2,326,097	1,694,029
SURPLUS FOR THE YEAR		143,444	1,669,424
TOTAL CHANGE IN EQUITY		143,444	1,669,424

Financials

Statement of financial position as at
31 december 2004

	Note	2004 \$	2003 \$
Current Assets			
Cash	3	1,356,380	1,177,487
Receivables	4	477,523	418,449
Inventories	5	7,277	22,667
Total Current Assets		1,841,180	1,618,603
Non-Current Assets			
Property, Plant and Equipment	6	4,550,416	4,486,805
Total Non-Current Assets		4,550,416	4,486,805
Total Assets		6,391,596	6,105,408
Current Liabilities			
Payables	7	616,994	478,460
Provisions	8	25,484	13,116
Total Current Liabilities		642,478	491,576
Non-Current Liabilities			
Interest Bearing Liabilities	7	465,000	465,000
Provisions	8	-	8,158
Total Non-Current Liabilities		465,000	473,158
Total Liabilities		1,107,478	964,734
Net Assets		5,284,118	5,140,674
Equity			
Retained Surplus	10	2,352,050	2,208,606
Capital Reserve	11	2,244,010	2,244,010
Asset Revaluation Reserve	11	688,058	688,058
Total Equity		5,284,118	5,140,674

Financials

Statement of cash flows for the year ended 31 December 2004

	Note	2004 \$	2003 \$
Cash Flows from Operating Activities			
BMDI Branches		57,983	137,752
BMDI Shops		22,400	25,000
Donations and Bequests		348,643	612,147
Raffle Proceeds		25,595	-
Trusts & Foundations		168,000	140,651
Sundry Income		34,434	63,590
BMDI Cord Blood Bank Income		78,586	269,454
Special Events		324,172	214,047
Accommodation Centre Operating Income		120,976	27,720
Major Events		-	1,596,876
Interest		21,847	-
Grant from Community Support Fund for Accommodation Centre		-	509,489
Commonwealth Government Grant – National Cord Blood Bank		1,937,774	1,405,646
Payments to Suppliers		(2,672,823)	(3,925,016)
Net Cash Flow from Operating Activities	12(b)	467,587	1,077,356
Cash Flows from Investing Activities			
Accommodation Centre Reconstruction		-	(904,556)
Purchase of Medical & Office Equipment		(288,694)	(370,481)
Net Cash Flow from Investing Activities		(288,694)	(1,275,037)
Net increase/(decrease) in cash held		178,893	(197,681)
Add Cash at 1 January 2004		1,177,487	1,375,168
Cash at 31 December 2004	12(a)	1,356,380	1,177,487

Financials

Notes to and forming part of the accounts for the year ended 31 december 2004

1. Statement of Significant Accounting Policies

The financial report is a general purpose financial report that has been prepared in accordance with Accounting Standards, the Corporations Act 2001, Urgent Issues Group Consensus Views and other authoritative pronouncements of the Australian Accounting Standards Board.

The financial statements are prepared in accordance with the historical cost convention and principles of accrual accounting. The accounting policies adopted are consistent with those of the previous year.

The following is a summary of the material accounting policies adopted by BMDI in the preparation of the financial report. The accounting policies have been consistently applied, unless otherwise stated.

Depreciation of Fixed Assets

Depreciation is calculated so as to write off the net cost of fixed assets over the respective economic lives of those assets. The depreciation rates used for each class of assets are:

Buildings	2.5%
Plant and equipment	5% - 33.3%

Revenue

Income collected by branches and held at 31 December 2004 is not brought to account until received.

Income Tax

This Institute is exempt from income tax and therefore no provision for income tax is made in these accounts.

Acquisition of Assets

The cost method of accounting is used for all acquisitions of assets regardless of whether shares or other assets are acquired. Cost is determined as the fair value of the assets given up at the date of acquisition plus cost incidental to acquisition.

Property

The Accommodation Centre was independently valued on 31 December 2003 and will be revalued each 3 years according to accounting standards.

Inventories

All inventories are stated as either at cost or net realisable value, whichever is the lower.

Cash

For the purposes of the statement of cash flows, cash includes cash on hand and at call deposits with banks.

Adoption of Australian Equivalents to International Financial Reporting Standards

Australia is currently preparing for the introduction of International Financial Reporting Standards (IFRS) effective for financial years commencing 1 January 2005. This requires the production of accounting data for future comparative purposes at the beginning of the next financial year.

The economic entity's management, along with its auditors, are assessing the significance of these changes and preparing for their implementation.

The directors are of the opinion that there are no key differences in the economic entity's accounting policies which will arise from the adoption of IFRS.

	2004	2003
2. Operating Expenses	\$	\$
Administration	257,955	234,082
Fundraising	291,938	274,376
	549,893	508,458
Depreciation included in administration expenses	19,929	18,216
Depreciation included in project activities	142,654	94,555
3. Cash		
Cash at Bank	1,355,880	1,176,987
Cash on Hand	500	500
	1,356,380	1,177,487
4. Receivables		
Current		
Interest Receivable	7,036	-
Sundry Debtors	54,016	194,606
Commonwealth Government - NCBCN Funding	416,471	223,843
	477,523	418,449
5. Inventories		
Current		
Stock of Marketing Items	7,277	22,667

Financials

Notes to and forming part of the accounts
for the year ended 31 december 2004

	2004	2003
6. Property, Plant and Equipment	\$	\$
Freehold Land - at independent valuation 2003	1,500,000	1,500,000
Land and Buildings - at cost	-	1,067,932
Building Redevelopment - at cost	-	2,244,010
	-	3,311,942
Less taken out on revaluation	-	(3,311,942)
	-	-
Buildings - at independent valuation 2003	2,500,000	2,500,000
Accumulated Depreciation	(62,500)	-
	2,437,500	2,500,000
BMDI House - Furniture & Fittings	190,099	186,208
Accumulated Depreciation	(29,404)	(12,015)
	160,695	174,193
Computer Equipment (Medical)	-	94,382
Accumulated Depreciation	-	(93,007)
	-	1,375
Medical Equipment	896,967	632,716
Accumulated Depreciation	(476,803)	(352,913)
	420,164	279,803
Office Furniture and Equipment	112,748	108,267
Accumulated Depreciation	(80,691)	(76,833)
	32,057	31,434
	4,550,416	4,486,805

Movement in carrying amounts

Balance at 31 December 2003

Freehold Land	Buildings	Plant & Equipment	Total
1,500,000	2,500,000	486,805	4,486,805

Additions

Freehold Land	Buildings	Plant & Equipment	Total
-	-	288,694	288,694

Movement in carrying amounts

Depreciation

Freehold Land	Buildings	Plant & Equipment	Total
-	(62,500)	(162,583)	(225,083)

Carrying amount at 31 December 2004

Freehold Land	Buildings	Plant & Equipment	Total
1,500,000	2,437,500	612,916	4,550,416

	Note	2004	2003
--	------	------	------

7. Creditors & Borrowings

Current

Sundry Creditors		466,994	285,062
Cord Blood Bank Creditors		150,000	150,000
Raffle Monies Held		-	43,398
		616,994	478,460

Non-Current

Secured Loan	12	465,000	465,000
--------------	----	----------------	----------------

8. Provisions

Current

Provision for Annual Leave		25,484	13,116
----------------------------	--	---------------	---------------

Non-Current

Provision for Long Service Leave		-	8,158
Aggregate Employee Benefit Liability		25,484	21,274
Number of employees at year end		11	7

9. Equity

Members' Guarantee

The company is limited by guarantee. If the company is wound up, the Constitution states that each member is required to contribute a maximum of \$2 each towards meeting any outstanding obligations of the company. At 31 December 2004 the number of members was 87 (2003-36).

Financials

Notes to and forming part of the accounts
for the year ended 31 december 2004

	2004	2003
10. Retained Surplus	\$	\$
Balance at 31 December 2003	2,208,606	1,443,738
Add Surplus for 2004	143,444	1,669,424
	2,352,050	3,113,162
Less Transfer to Capital Reserve	-	904,556
Balance at 31 December 2004	2,352,050	2,208,606

11. Reserves

Capital Reserve

Balance at 31 December 2003	2,244,010	1,339,454
Transfer from Retained Surplus of amounts paid for construction of the Accommodation Centre during the year	-	904,556
Balance at 31 December 2004	2,244,010	2,244,010

Asset Revaluation Reserve

Balance at 31 December 2003	688,058	-
Valuation increase of the Accommodation Centre Building	-	688,058
Balance at 31 December 2004	688,058	688,058

12. Cash Flow Information

Notes to and forming part of the Statement of Cash Flows

a) Reconciliation of Cash

Cash Balance comprises:

Bank Accounts	1,355,880	1,176,987
Cash on Hand	500	500
	1,356,380	1,177,487

b) Reconciliation of Operating Surplus to the Cash Flows from Operations

Operating Surplus	143,444	1,669,424
Depreciation	225,083	112,771
Provision for Annual Leave and Long Service Leave	4,210	2,504

	2004	2003
12. Cash Flow Information	\$	\$

Notes to and forming part of the Statement of Cash Flows

b) Reconciliation of Operating Surplus to the Cash Flows from Operations

Change in assets and liabilities:		
- Debtors	(59,074)	135,971
- Trade and Sundry Creditors	181,932	(154,527)
- Stock held for Resale	15,390	(2,185)
- Raffle Receipts Held	(43,398)	43,398
- Secured Loan	-	(730,000)
	467,587	1,077,356

13. Bank Fixed Term Loan

There is a loan facility from the Commonwealth Bank of \$465,000 which has a further eight years to run.

Full interest offset arrangements have been negotiated on several main credit accounts held with the Bank.

The bank loan is secured by a First Registered Mortgage over property situated at 4-12 Blackwood Street, North Melbourne, Victoria.

14. Segment Information

BMDI operates in the charitable services segment in Australia.

15. Related Parties

The names of persons who were Directors of Bone Marrow Donor Institute Limited during the financial year are listed in the Directors' Report.

The Directors were all members of BMDI and hence were involved in transactions with BMDI during the financial year on terms and conditions no more favourable than those available for similar transactions to other employees or members.

No Directors of BMDI received any remuneration from BMDI during the financial year. There were no related party transactions between the Directors or Director related entities and BMDI during the financial year other than noted above.

16. Company Details

The registered office and principal place of business of BMDI is the Rotary Bone Marrow Research Centre, 1d Royal Parade, Parkville Victoria 3053.

Financials

Notes to and forming part of the accounts
for the year ended 31 december 2004

17. Financial Instruments

a) Credit Risk

The maximum exposure to credit risk, excluding the value of any collateral or other security at balance date to recognised financial assets is the carrying amount, net of any provisions for doubtful debts, as disclosed in the Statement of Financial Position and Notes to the Financial Statements.

b) Net Fair Values

The net fair value of all financial instruments approximates their carrying value at balance date.

c) Interest Rate Risk

BMDI's exposure to interest rate risk, which is the risk that a financial instrument's value will fluctuate as a result of changes in market interest rates and the effective weighted average interest rates on classes of financial assets and financial liabilities is as follows:

	Weighted Average Effective Interest Rate	Floating Interest Rate		Fixed Interest Rate Maturing within one Year (5%)		Non-Interest Bearing		Totals	
		2004 \$	2003 \$	2004 \$	2003 \$	2004 \$	2003 \$	2004 \$	2003 \$
Financial Assets									
Cash	See below	-	-	883,321	-	473,059	1,177,487	1,356,380	1,177,487
Receivables	-	-	-	-	-	472,962	418,449	472,962	418,449
Total Financial Assets	-	-	-	883,321	-	946,021	1,595,936	1,829,342	1,595,936
Financial Liabilities									
Bank Loans	See below	465,000	465,000	-	-	-	-	465,000	465,000
Trade and Sundry Creditors	-	-	-	-	-	643,899	491,576	643,899	491,576
Total Financial Liabilities	-	465,000	465,000	-	-	643,899	491,576	1,108,899	956,576

The interest rate on the bank loan is a floating rate calculated monthly. At balance date it was approximately 6.5% per annum but there is a full offset against operating bank accounts. This results in no interest being received on credit funds in these bank accounts but reduced or no interest is payable on borrowings.

Directors' Declaration



DIRECTORS' DECLARATION

The Directors of the Bone Marrow Donor Institute declare that:

1. The financial statements and notes:
 - a) comply with Accounting Standards and the Corporations Act 2001;
 - b) give a true and fair view of the financial position as at 31 December 2004 and performance for the period ended on that date of BMDI.
2. In the Directors' opinion, there are reasonable grounds to believe that the Bone Marrow Donor Institute will be able to pay its debts as and when they become due and payable.

This declaration is made in accordance with a resolution of the Board of Directors.

A handwritten signature in dark ink, appearing to read 'John M Opie', written over a horizontal line.

John M Opie AM

A handwritten signature in dark ink, appearing to read 'John C Barbour', written over a horizontal line.

John C Barbour

Dated this 15th day of March 2005
Bone Marrow Donor Institute Ltd

Bone Marrow Donor Institute Ltd
1d Royal Parade (near Grattan Street) Parkville Victoria 3052
A Registered Charity ABN: 930 97 333 018
Locked Bag AAA PO Carlton South Victoria 3053 Australia
Telephone: 61 3 9342 7888 Facsimile: 61 3 9342 7842
Email: savealife@bmdi.org.au Website: www.bmdi.org.au

Auditor's Report

draper dillon
chartered accountants



**INDEPENDENT AUDIT REPORT TO THE MEMBERS OF
THE BONE MARROW DONOR INSTITUTE LTD.
FOR THE YEAR ENDED 31ST DECEMBER, 2004.**

Scope

We have audited the financial report of Bone Marrow Donor Institute Limited for the financial year ended 31st December, 2004. The company's directors are responsible for the financial report. We have conducted an independent audit of this financial report in order to express an opinion on it to the members of the company.

Our audit has been conducted in accordance with Australian Auditing Standards to provide reasonable assurance whether the financial report is free of material misstatement. Our procedures include examination, on a test basis, of evidence supporting the amounts and other disclosures in the financial report, and the evaluation of accounting policies and significant accounting estimates. These procedures have been undertaken to form an opinion whether, in all material respects, the financial report is presented fairly in accordance with Accounting Standards and other mandatory professional reporting requirements and statutory requirements so as to present a view which is consistent with our understanding of the company's and consolidated entity's financial position and performance as represented by the results of their operations and their cash flows.

The audit opinion expressed in this report has been formed on the above basis.

Qualification


As is common for organisations of this type, it is not practicable for Bone Marrow Donor Institute Limited to maintain an effective system of internal control over donations, subscriptions and other fund raising activities until their initial entry in the accounting records. Accordingly, our audit in relation to fund raising was limited to amounts recorded. The audit opinion expressed in this report has been formed on the above basis.

Audit Opinion

In our opinion, subject to the effect of the qualification above, the financial report of the Bone Marrow Donor Institute Limited is in accordance with:

- (a) the Corporations Act 2001 including:
 - (i) giving a true and fair view of the company's financial position as at 31st December, 2004 and of its performance for the year ended on that date; and
 - (ii) complying with Accounting Standards and the Corporation Regulations 2001; and
- (b) other mandatory professional reporting requirements

DRAPER DILLON
CHARTERED ACCOUNTANTS


N.L. DRAPER
PARTNER
Melbourne

Dated: 15th March 2005

Draper Dillon Pty Ltd 4th floor 499 St Kilda Road telephone (03) 9866 2888 email mail@draperdillon.com.au
ACN 007 219 703 Melbourne 3004 facsimile (03) 9866 2899 internet www.draperdillon.com.au

PARTNERS NORMAN DRAPER FCA PAUL DILLON CA GEORGE ATRAMS CPA JUSTIN MCCARTNEY CA

Contact Details



Lockie

In April 2004, Lachlan “Lockie” Hagan-Ragatz was diagnosed with leukaemia. Within weeks, his family moved from Ballarat to BMDI House in North Melbourne, so that he could receive treatment at the Royal Children’s Hospital. Unfortunately, chemotherapy failed to cure Lockie however in September, Lockie successfully received a cord blood transplant, using a unit of cord blood from the BMDI Cord Blood Bank. In December, Lockie celebrated Christmas with a new lease of life. In 2005, his family’s single hope is simply for him to be well, so he can once again live as a normal young boy should.

Lockie Hagan-Ragatz.

BMDI Recycle Shops

DRYSDALE

Mrs Moya Hughes
BMDI’s Recycle Shop
Shop 2a, 6 High Street
DRYSDALE VIC 3222

Business: 03 5251 2507

GEELONG

Mrs Marj Boland
BMDI’s Recycle Shop
203 Pakington Street
GEELONG VIC 3220

Business: 03 5229 2971

Branches

ALBURY / WODONGA

Mrs Wendy Henry
653 Pearsall Street
LAVINGTON NSW 2641

Home: 02 6040 4515

BENDIGO

Mrs Rhonda Bechaz
33 Michael Street
BENDIGO VIC 3550

Home: 03 5443 5313

Fax: 03 5443 5313

BERWICK (CBB)

Mrs Leonie Norman
6 Reginald Close
BERWICK VIC 3806

Home: 03 9769 5240

Work: 03 9769 598

CROYDON

Mr Alan Somers
76 Belvedere Drive
MONTROSE VIC 3765
Home: 03 9728 8341
Fax: 03 9728 5600
Mobile: 0419 134 300

DONALD

Mrs Leila Honicke
18 McCracken Avenue
DONALD VIC 3480
Home: 03 5497 1481

ELTHAM DIAMOND VALLEY

Gerry Lamers
103 Goldsworthy Lane
PLENTY VIC 3090
Home: 03 9432 1544

GEELONG

Mrs Marj Boland
BMDI's Recycle Shop
203 Pakington Street
GEELONG VIC 3220
Home: 03 5229 2971

GOULBURN VALLEY

Mrs Joy Barrow
PO Box 1980
SHEPPARTON VIC 3630
Home: 03 5821 1340

MARYBOROUGH

Mrs Margaret Nottingham
49 Dundas Road
MARYBOROUGH VIC 3465
Home: 03 5461 2534

MURRAY CAMPASPE

Mr Peter Bellett
PO Box 41
MOAMA NSW 2731
Mobile: 0427 346 183

SOUTH EASTERN (CBB)

Mrs Dawn Howard
496 Burke Road
CAMBERWELL VIC 3124
Home: 03 9882 4736

SWAN HILL

Ms Lois Carnie
Box 517
SWAN HILL VIC 3585
Business: 03 5032 9466
Home: 03 5033 2954
Fax: 03 5032 9637

WAVERLEY

Mrs Sonia Paulett
21 Gardenia Street
BLACKBURN VIC 3130
Home: 03 9877 1351

Head Office

Bone Marrow Donor Institute

Locked Bag AAA
PO Carlton South VIC 3053

1d Royal Parade
Parkville VIC 3052

Phone: 03 9342 7888
Fax: 03 9342 7842
Email: savealife@bmdi.org.au
Website: www.bmdi.org.au

The work of the Bone Marrow Donor Institute is vital in continuing to provide research, support, care and treatment for cancer patients and their families, and there are many ways you can support us.

This may be through:

- donating to one of our many projects
- volunteering your time
- organising a fundraising event
- becoming a corporate partner
- making a bequest
- attending an event.

To donate or find out more information, visit the website at www.bmdi.org.au or call **03 9342 7888**.

Your support is greatly appreciated.

*Giving hope,
saving lives*



*Giving hope,
saving lives*