

Yes, I would like to support

We can arrange a monthly direct debit from your nominated bank account. Simply phone us on **03 9342 7888** and we will arrange everything for you.

OR please complete the following form:

1. Select your gift preference

\$20 a month \$35 a month

\$50 a month \$100 a month

Amount: \$ _____
(Any amount you donate is greatly appreciated. All donations \$2 and over are tax deductible)

- Each month, a regular amount is automatically deducted from your credit card.
- At the end of the financial year you'll receive a tax receipt for your regular donations.

OR please accept my once-off donation of:

Amount: \$ _____
(This is a once-off donation which will not be regularly deducted from your credit card)

2. Please complete your details

Name: _____ D.O.B: (optional) _____

Address: _____

Contact Phone: _____ Mobile: _____

Email: _____

Yes, I would like to receive monthly e-news

3. Complete your payment details

Card Type: VISA MASTERCARD AMEX

Cardholder Name: _____

Card Number: _____ / _____ / _____

Expiry: _____ / _____ Cardholder Signature: _____

OR Please contact me to arrange direct debit from my nominated bank account.

4. Return to us by mailing to:



Fight Cancer Foundation™
Giving hope. Saving lives.

Locked Bag AAA
PO Carlton South VIC 3053
Phone 03 9342 7888
www.fightcancer.org.au



Fight Cancer Foundation™
Giving hope. Saving lives.

ABOUT

Fight Cancer Foundation was formed in 1989 as the Bone Marrow Donor Institute to establish a bone marrow donor register to give leukaemia and cancer patients a second chance of life.

Fight Cancer Foundation has developed projects with a wide capacity of community impact giving cancer patients and their families the opportunity for a second chance of life.

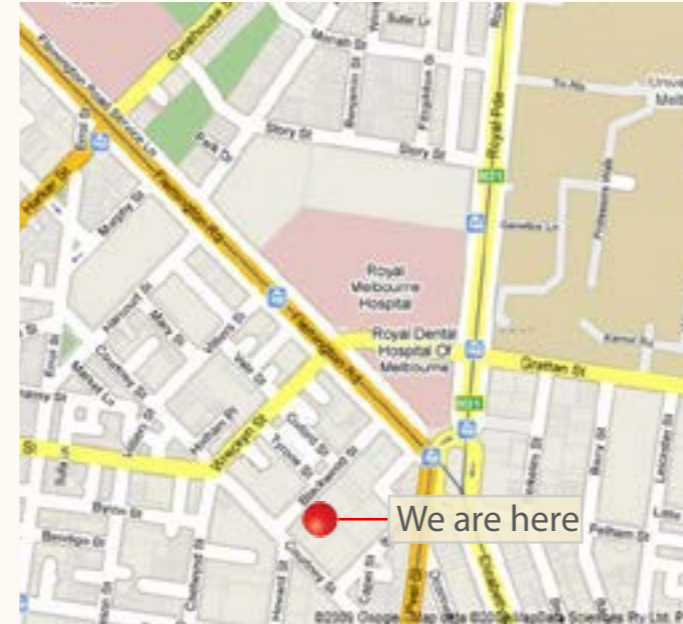
Accommodation Centres for Patients and Carers
Fight Cancer Foundation has responded to cancer patients and their families in need of affordable accommodation close to major treating hospitals. We have established accommodation centres in Melbourne, Hobart and Albury.

Life Saving Research
Vital research is being undertaken in collaboration with The Royal Melbourne Hospital into cancer treatments and cures.

Education Support for Children and Teens
Fight Cancer Foundation funds education support to assist students while they are away from school during treatment and recovery.

BMDI Cord Blood Bank
People with leukaemia or other blood cancers can be offered a second chance of life with a cord blood transplant. This vital community health project was developed to provide an alternative treatment for patients needing a bone marrow transplant unable to find a match with a suitable donor.

Australian Bone Marrow Donor Registry
This was the first major project for Fight Cancer Foundation and was established in direct response to a community need. Today, 175,000 Australians are registered and the Registry is linked to an international database of 10 million potential donors.



Fight Cancer Foundation™
Giving hope. Saving lives.

Location: 4 - 12 Blackwood Street, NORTH MELBOURNE,
VIC 3051

P: 03 9320 7400 | F: 03 9320 7421
E: savealife@fightcancer.org.au
W: www.fightcancer.org.au



*Your Home
Away from Home*



**BMDI Rotary House
Information Brochure**



Fight Cancer Foundation™
Giving hope. Saving lives.

BMDI Rotary House

Operated by Fight Cancer Foundation on a not-for-profit basis, BMDI Rotary House provides patients and their carers with high quality, affordable accommodation close to the Royal Melbourne Hospital and other local treatment centres.

Our vision is to create a warm and inviting accommodation facility, providing a caring and supportive environment for the residents, so they can live as normal a life as possible while under challenging circumstances.

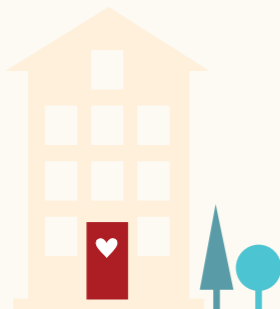
FACILITIES

BMDI Rotary House has 13 self contained fully furnished units (1 and 2 bedroom). The apartments are equipped with internet, television, DVD player, microwave, hotplates, refrigerator, iron/board, toaster, kettle, crockery and a range of cooking utensils and cleaning equipment. Laundry facilities are also available.

Barbeque facilities are available on the spacious patios. BMDI Rotary House provides a sanctuary for families who are facing the most difficult time of their lives.

There are communal areas for families, children and carers, a gym, library, computer room, games room, massage therapy and a counselling service.

*We provide a home
away from home*



BOOKINGS AND RATES

Bookings are made by contacting your Social Worker and are subject to availability.

There is a minimal fee per apartment per night. This is an 'out of pocket' charge for which you will be invoiced fortnightly.

A completed application form to the Health Department for patient accommodation assistance, must also be supplied to enable BMDI to bulk bill for the balance of your accommodation cost. Eligibility for accommodation assistance can be discussed with the House Manager when making a booking, or with your Social Worker.

If eligible for accommodation assistance the appropriate application must be finalised prior to departure or the total fee must be paid.

CHECK IN AND OUT

Check in time is between 9.00am and 5.00pm. If you are unable to arrive within this time, please contact the House Manager. Check out is by 10.30am.

HOUSE STAFF

The BMDI Rotary House Manager or after hours caretakers will be on hand to welcome you and answer queries upon your arrival. They will be happy to assist you throughout your stay.

Social events are organised by staff on a monthly basis. The events or activities give residents the opportunity to meet other guests facing a similar journey.

CAR PARKING

One secure car park per apartment.



Wi Fi

CLEANING

We ask that you maintain a high level of cleanliness within your apartment and that you thoroughly clean the apartment prior to your departure.

GROCERIES/TOILETRIES

Groceries and toiletries are not supplied by BMDI Rotary House.

INTERNET

Free access to the internet is available in the Computer Room and connection for your own laptop/computer is available in each apartment.

LAUNDRY/LINEN

Bed linen and towels are provided on a weekly basis. You will be required to changeover your linen. Laundry facilities (washing machine and dryer) are provided.

MAIL

The address for receipt of your mail is:

Your name; c/- BMDI Rotary House, 4-12 Blackwood Street; NORTH MELBOURNE VIC 3051

SAFETY AND SECURITY

BMDI Rotary House is a secured building with an after hours caretaker for any emergencies. The House doors are locked at all times. At check in you will be given a swipe card for the front door and key to your apartment. You will be required to pay a key deposit of \$20 refundable upon check out when the keys must be returned.

TELEPHONES

Telephones are located in each apartment. They are available for incoming calls and a specific number will be allocated on arrival. Outgoing calls require a "phone away" card; these cards are available for purchase from many retail outlets, including supermarkets and convenience stores.

VALUABLES

As there is no facility for securing valuables, it is advisable that you refrain from bringing valuables with you. We do not accept responsibility for loss or damage to valuables.

VISITORS

Visitors are welcome, but must be met by you, at the front entrance and signed in and out of the building. The registration book is located in the foyer on the ground floor.

FIRE SAFETY

BMDI Rotary House is equipped with smoke detectors, fire extinguishers and fire hoses.

Smoking is not permitted within the building.